



OAE screening with a CAR...
It's just more FUN!

Periodic hearing screening leads to **early detection** of hearing loss



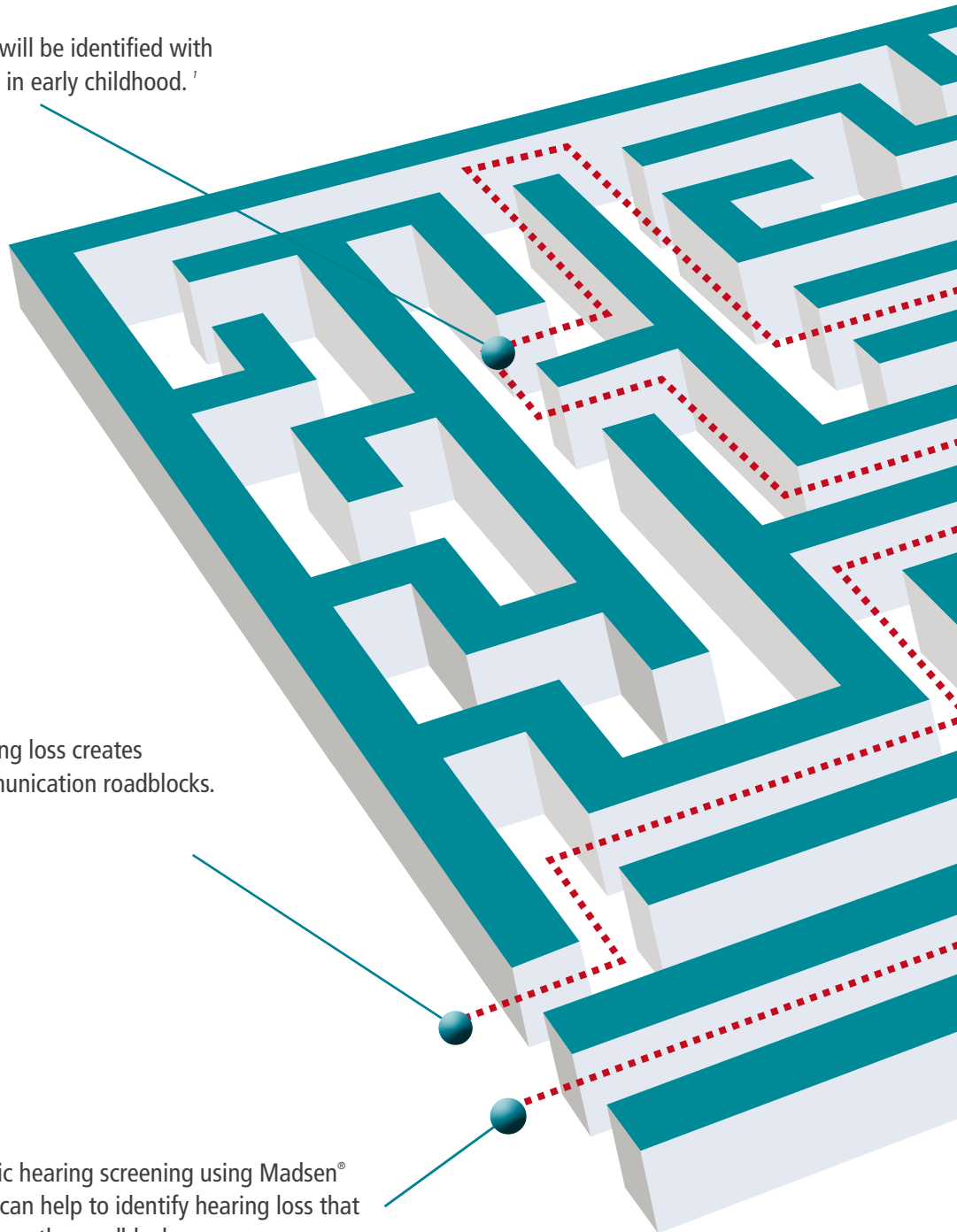
6 - 7 per 1000 children will be identified with permanent hearing loss in early childhood.'

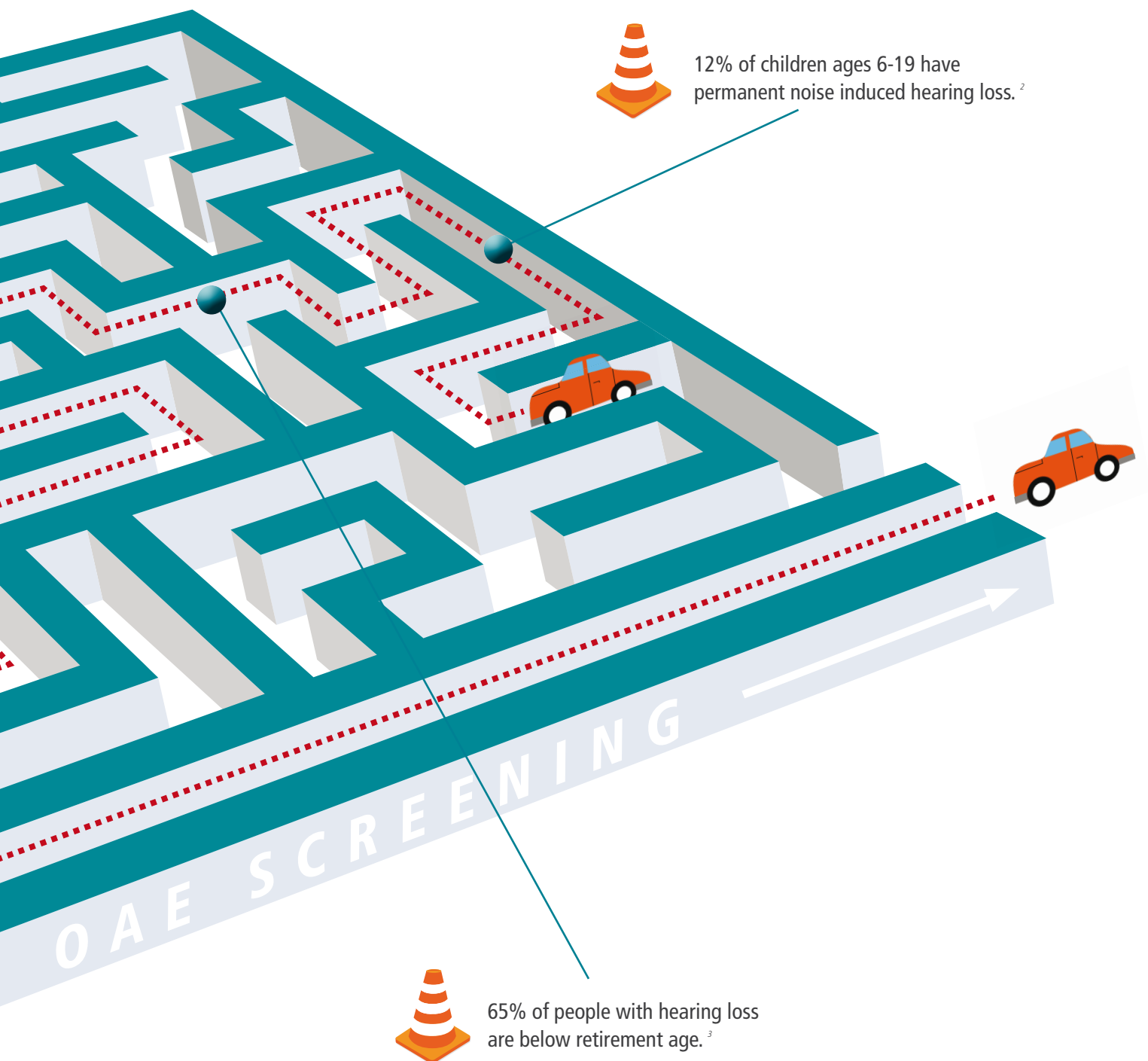


Hearing loss creates communication roadblocks.



Periodic hearing screening using Madsen® Alpha can help to identify hearing loss that can cause the roadblocks.







Video helps
reduce **fidgeting**
and **squirming**!



Hearing loss is an invisible condition

Hearing screening for children

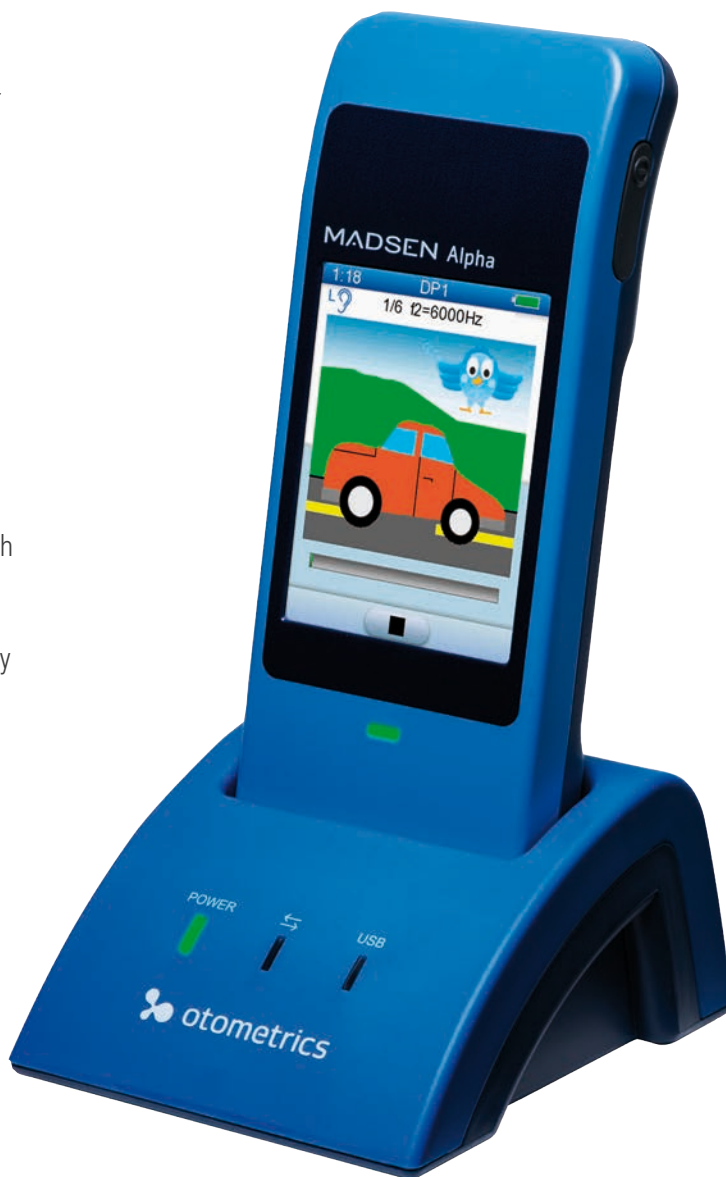
Performing surveillance and screening within the medical home is the best way to monitor young children for late onset hearing loss⁴.

Hearing screening for children while important, can be a challenge. The Madsen® Alpha OAE+ from Natus has an intuitive touchscreen that puts children and users at ease. The video that appears during the test is simply engaging and enjoyable. The Alpha has made hearing screening for children FAST and FUN!

The starting point to better hearing health

OAE as a choice for hearing screening provides doctors with objective information about cochlear function for all ages. Assessing cochlear function is fast, easy and cost effective with the Madsen Alpha.

Addressing hearing loss early leads to the opportunity for early intervention, on-time language development and success in school.



Objective hearing screening in the medical home

- Objective information on hearing
- Patient convenience
- Additional revenue stream
- Beneficial in expediting the referral process
- Helps to reduce unnecessary referrals



The pdf report

Customize your reports
with your name



Name: Jones, Jill
ID: 12341234560
DOB: Tuesday, January 08, 1946

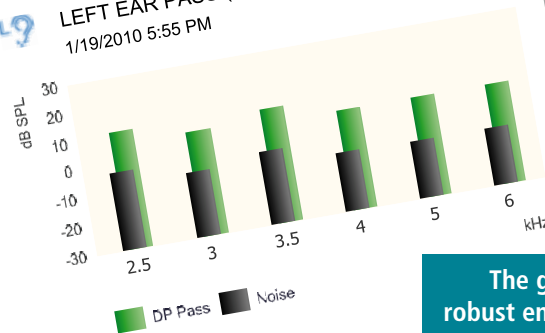
Tester:
System Info: Alpha OAE+ #1 / Probe 70001

Protocol DP2 (2500-6000, 4/6 to Pass)						
F2	L1	L2	DP	NF	SNR	Result
2500	65	55	10.8	-3.3	14.2	Pass
3000	65	55	6.5	-7.6	14.1	Pass
3500	65	55	9.6	-5.0	14.6	Pass
4000	65	55	4.6	-9.9	14.5	Pass
5000	65	55	4.7	-10.3	15.0	Pass
6000	65	55	4.5	-10.1	14.7	Pass

DPOAE Test



LEFT EAR PASS (Test Time 17 sec)
1/19/2010 5:55 PM



The green bars reflect
robust emissions compared to
the noise floor (grey bars)

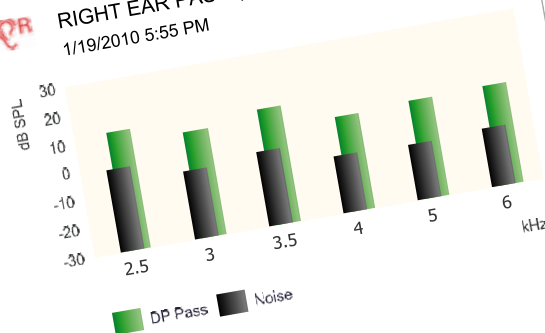
Frequency values

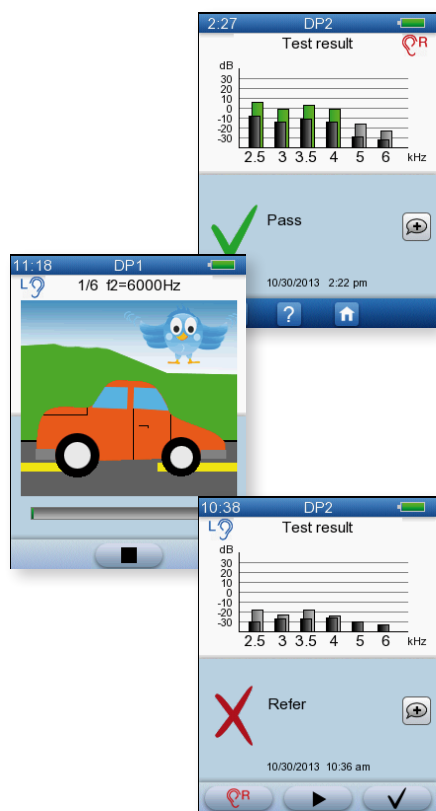
Protocol DP2 (2500-6000, 4/6 to Pass)						
F2	L1	L2	DP	NF	SNR	Result
2500	65	55	11.8	-1.6	13.4	Pass
3000	65	55	7.2	-6.5	13.7	Pass
3500	65	55	10.3	-4.1	14.4	Pass
4000	65	55	3.2	-10.6	13.8	Pass
5000	65	55	4.2	-10.7	14.9	Pass
6000	65	55	5.0	-10.0	15.0	Pass

DPOAE Test

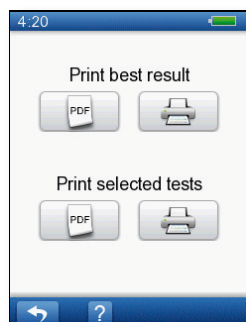


RIGHT EAR PASS (Test Time 17 sec)
1/19/2010 5:55 PM





Operators can choose from an entertaining video or traditional OAE screen.



The report is seamlessly transferred through the docking station to PC.



Touchscreen navigation

With single touch operation, learning and screening is fast.

Madsen Alpha
Full size.

Meets the requirement for CPT code 92587

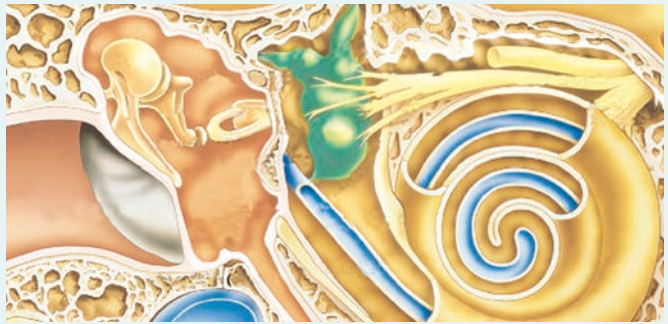
CPT 92587

Description: Distortion product evoked otoacoustic emissions; limited evaluation (to confirm the presence or absence of hearing disorder, 3–6 frequencies) or transient evoked otoacoustic emissions, with interpretation and report.

What are Otoacoustic Emissions?

Otoacoustic emissions (OAEs) are sounds measurable in the ear canal of normal, healthy ears, produced by outer hair cell activity in the cochlea. These sounds are small but can be measured with a tiny microphone.

It is important to note that otoacoustic emissions do not actually test hearing. OAEs are clinically significant in that they provide information about the integrity of the cochlea and outer hair cell function.



See more about Madsen Alpha at hearing-balance.natus.com/alpha

¹⁾ *Even Minimal, Undetected Hearing Loss Hurts Academic Performance, Research Shows. American Speech, Language and Hearing Association 2004.*

²⁾ *Updating Hearing Screening Practices In Early Childhood Settings. Eiserman WD, Shisler L, Foust TE, Buhrman J, Winston RL, White KR (2008). Infants and Young Children, 21(3): 186-193.*

³⁾ *Retrieved from [hearFlorida.com](https://hearFlorida.com/news-information/fun-facts-about-hearing)*

⁴⁾ *Beyond Newborn Hearing Screening: Recognizing The Signs Of Late Onset Hearing Loss In Infants And Young Children. Leisha Eiten, M.A., CCC-A, Boys Town National Research Hospital.*

Healthcare solutions with one thing in mind. You.

©2020 Natus Medical Incorporated. All Rights Reserved. All product names appearing on this document are trademarks or registered trademarks owned, licensed to, promoted or distributed by Natus Medical Incorporated, its subsidiaries or affiliates. 7-26-3081-EN Rev05

natus®

Natus Medical Incorporated

natus.com